



111 Roman Road, Salisbury, Wiltshire, SP2 9BZ

£1,250 PCM

## About The Property

A spacious three-bedroom semi-detached house located on a popular residential road is available for long-term rent, offered unfurnished. This property features a private garden, a conservatory, a garage, and two off-street parking spaces. It has double glazing throughout, with blinds or curtain rails fitted to most windows.

On the ground floor, you will find an entrance hall leading to the stairs, a bright living room to the right, and a separate dining room to the left. The well-proportioned living room is fitted with blinds, while the spacious dining room includes a large understairs cupboard and a feature fireplace. Adjacent to the dining room is a fitted kitchen, which offers a range of cupboards, space for a washing machine, and a free-standing gas cooker. The kitchen opens into the conservatory with direct access to the garden, as well as to the downstairs WC and garage.

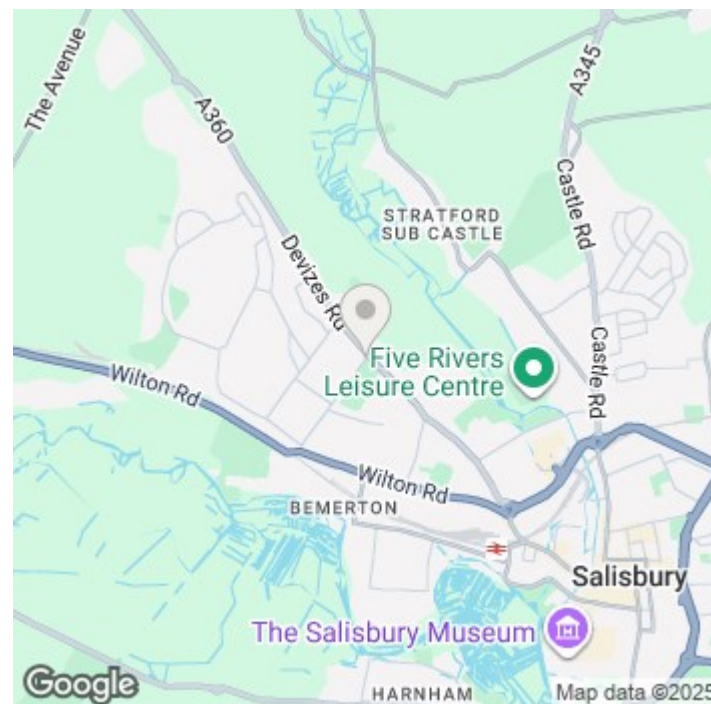
The garage is of good size, equipped with shelving and sufficient space for a car, accessible via the main up-and-over door or through an internal door from the conservatory.

The small private garden is enclosed by walls, primarily laid to lawn, with a small paved area.

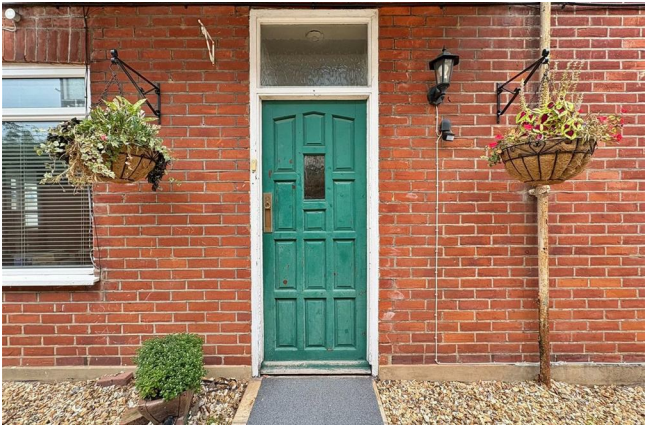
Upstairs, a large skylight brightens the landing. The main bedroom is a generous double with fitted wardrobes and a ceiling fan. The second bedroom is also a double, while the third bedroom is ideal as a single room or study. The bathroom includes a bath with a shower over it, a washbasin, WC, and a radiator with a thermostatic valve.



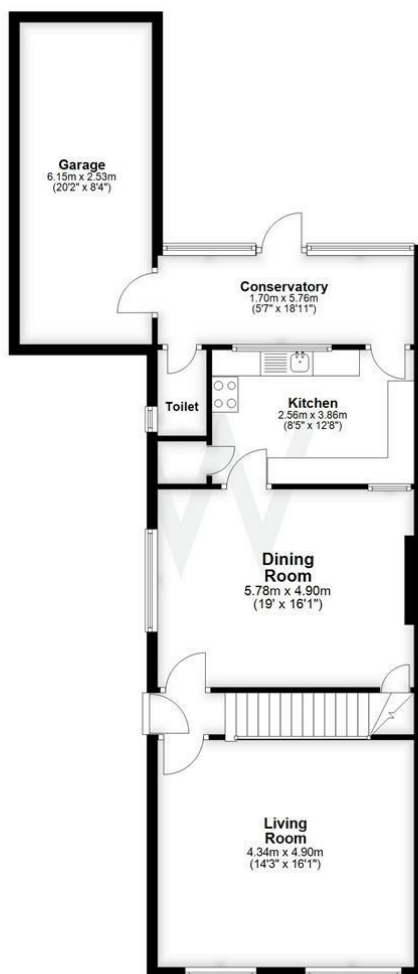
- Semi-detached three-bedroom house
- Popular residential road
- Two off-street parking spaces
- Conservatory with garden access
- Private enclosed garden
- Garage with power and shelving
- Two double bedrooms plus study
- Fitted kitchen with gas cooker
- Bathroom with shower over bath
- Offered unfurnished, long-term



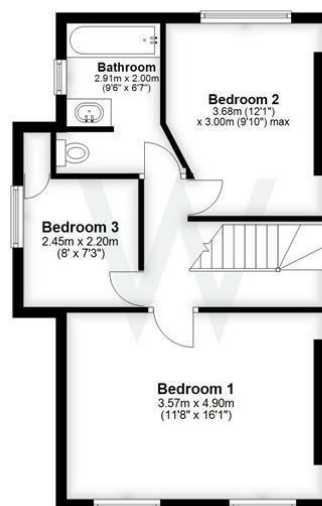




## Ground Floor



## First Floor



Total area: approx. 141.7 sq. metres (1525.7 sq. feet)  
111 Roman Road, Salisbury

## Further Information

Let available date: 3rd November 2025 NB: This date is provisional and will only be confirmed once referencing has been successfully completed.

Property type: House - Semi-Detached

Furnish type: Unfurnished

Deposit: £1,440

Local authority: Wiltshire Council

Council Tax: Band D

EPC: D(67)

## Energy Efficiency Rating

	Current	Potential
Very energy efficient - lower running costs		
(92 plus) <b>A</b>		
(81-91) <b>B</b>		
(69-80) <b>C</b>		
(55-68) <b>D</b>	67	74
(39-54) <b>E</b>		
(21-38) <b>F</b>		
(1-20) <b>G</b>		
Not energy efficient - higher running costs		
<b>England &amp; Wales</b>	EU Directive 2002/91/EC	